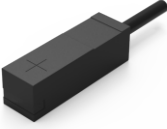
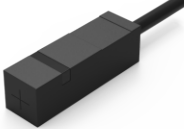
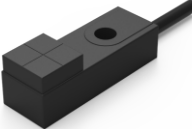
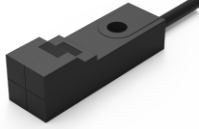



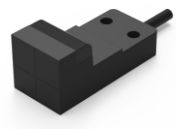


Appearance				
Mounting	Unshielded	Unshielded	Unshielded	Unshielded
Housing size	E06	E07	E08	E09
Sensing distance	1.5mm ± 10%	1.5mm ± 10%	2.5mm ± 10%	2.5mm ± 10%
Housing material	Plastic			
Operating voltage	10~30V DC(Ripple < 10%)			
Voltage drop	< 1.5V			
Load Current , Max	150mA			
No-load supply current	< 10mA			
Leakage current	< 0.01mA			
Switch frequency	2KHz			
Repeat accuracy	0.04mm			
Hysteresis	< 15% (Sr)			
Sensing surface material	PC			
Operating Temperature	-25℃~+70℃			
Protective circuit	Short circuit			
Degree of protection	IP67			
Over-load trip	180mA			
Model No.	TEN06-1.5 <sup>NO</sup> /TEN06-02 <sup>NO</sup>		TEN07-1.5 <sup>NO</sup> /TEN07-02 <sup>NO</sup>	
	TEN08-2.5 <sup>NO</sup> /TEN08-03 <sup>NO</sup>		TEN09-2.5 <sup>NO</sup> /TEN09-03 <sup>NO</sup>	
NPN Normally open	TEN06-1.5 <sup>NO</sup> /TEN06-02 <sup>NO</sup>		TEN07-1.5 <sup>NO</sup> /TEN07-02 <sup>NO</sup>	
Others	TEN08-2.5 <sup>NO</sup> /TEN08-03 <sup>NO</sup>		TEN09-2.5 <sup>NO</sup> /TEN09-03 <sup>NO</sup>	
	<sup>NO</sup> :NPN Normally open	<sup>NC</sup> :NPN Normally closed	<sup>PO</sup> :PNP Normally open	<sup>PC</sup> :PNP Normally closed

HOT

HOT

Appearance				
Mounting	Unshielded	Unshielded	Unshielded	Unshielded
Housing size	E10	E12	E15	E16
Sensing distance	2.5mm/4mm ± 10%	2.5mm/4mm ± 10%	5mm/8mm ± 10%	5mm/8mm ± 10%
Housing material	Plastic			
Operating voltage	10~30V DC(Ripple < 10%)			
Voltage drop	< 1.5V			
Load Current , Max	150mA			
No-load supply current	< 10mA			
Leakage current	< 0.01mA			
Switch frequency	1KHz			
Repeat accuracy	0.04mm			
Hysteresis	< 15% (Sr)			
Sensing surface material	PC			
Operating Temperature	-25℃~+70℃			
Protective circuit	Short circuit			
Degree of protection	IP67			
Over-load trip	180mA			
Model No.	TEN10-2.5 <sup>NO</sup> /TEN10-04 <sup>NO</sup>		TEN12-2.5 <sup>NO</sup> /TEN12-04 <sup>NO</sup>	
	TEN15-05 <sup>NO</sup> /TEN15-08 <sup>NO</sup>		TEN16-05 <sup>NO</sup> /TEN16-08 <sup>NO</sup>	
NPN Normally open	TEN10-2.5 <sup>NO</sup> /TEN10-04 <sup>NO</sup>		TEN12-2.5 <sup>NO</sup> /TEN12-04 <sup>NO</sup>	
Others	TEN15-05 <sup>NO</sup> /TEN15-08 <sup>NO</sup>		TEN16-05 <sup>NO</sup> /TEN16-08 <sup>NO</sup>	
	<sup>NO</sup> :NPN Normally open	<sup>NC</sup> :NPN Normally closed	<sup>PO</sup> :PNP Normally open	<sup>PC</sup> :PNP Normally closed

Fiber Optic

Slot Type

Photoelectric

Laser

Proximity

Displacement

Magnetic

Contact

Light Curtains

Ultrasonic

Connectivities

Tester

Guidance

Rule of Compilation

Inductive Sensors

Upgraded Type

Standard Distance

Extended Distance

Long Distance

Square

Mini Square

Mini-Cylindrical

Short-Body

Ring-Type

Metal Factor-1

Ferrous Detection

Aluminum Detection

Metal Face

Weld Field Immune

High-sealing

Temperature

High Pressure

NAMUR

Analog Output

DC 2 Wires

Capacitive Sensors

Cylindrical

Corrosion Resistant

Flat Type

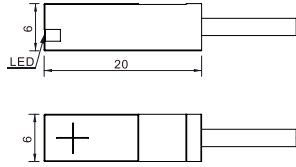
Level Detection

## Mini-square

## Dimensions (Unit:mm)

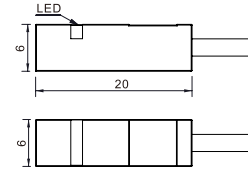
E06

TEN06-1.5 □□



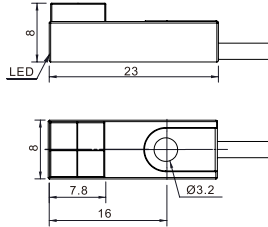
E07

TEN07-1.5 □□



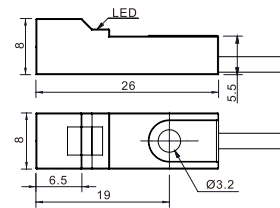
E08

TEN08-2.5 □□



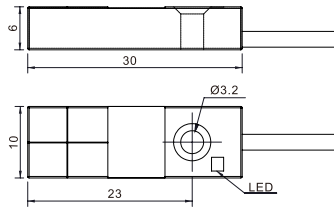
E09

TEN09-2.5 □□



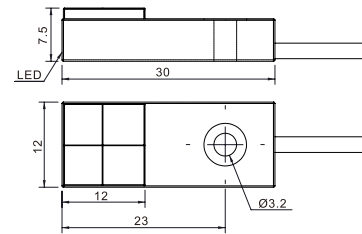
E10

TEN10-2.5/04 □□



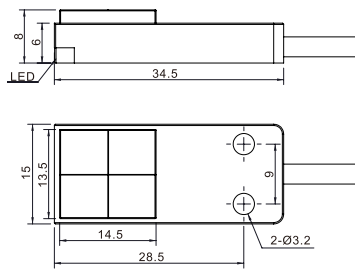
E12

TEN12-2.5/04 □□



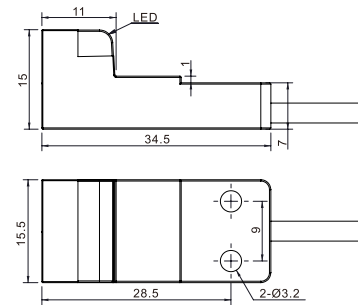
E15

TEN15-05/08 □□



E16

TEN16-05/08 □□



Fiber Optic
Slot Type
Photoelectric
Laser
Proximity
Displacement
Magnetic
Contact
Light Curtains
Ultrasonic
Connectivities
Tester

## Guidance

## Rule of Compilation

## Inductive Sensors

Upgraded Type
Standard Distance
Extended Distance
Long Distance
Square

## Mini Square

Mini-Cylindrical
Short-Body
Ring-Type
Metal Factor-1
Ferrous Detection
Aluminum Detection
Metal Face
Weld Field Immune
High-sealing
Temperature
High Pressure
NAMUR
Analog Output
DC 2 Wires

## Capacitive Sensors

Cylindrical
Corrosion Resistant
Flat Type
Level Detection